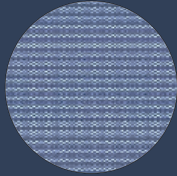
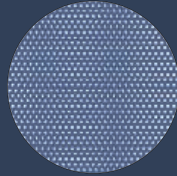


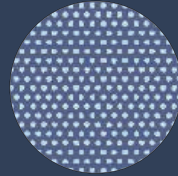
A SELECTION OF PERFORATIONS AVAILABLE



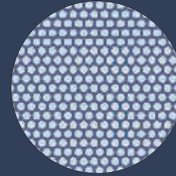
R-0.5mm, T-1.25mm



R-1mm, T-2mm



R-1.5mm, T-3mm



R-2mm, T-3mm



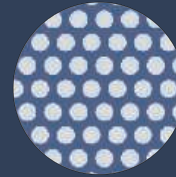
R-3mm, T-5mm



R-4mm, T-6mm



R-5mm, T-8mm



R-6mm, T-9mm



R-8mm, T-12mm



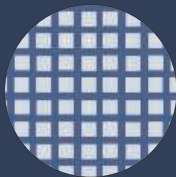
R-10mm, T-15mm



R-12mm, T-16mm



R-15mm, T-18mm



C-5mm, U-7.5mm



C-10mm, U-12mm



C-10mm, U-15mm



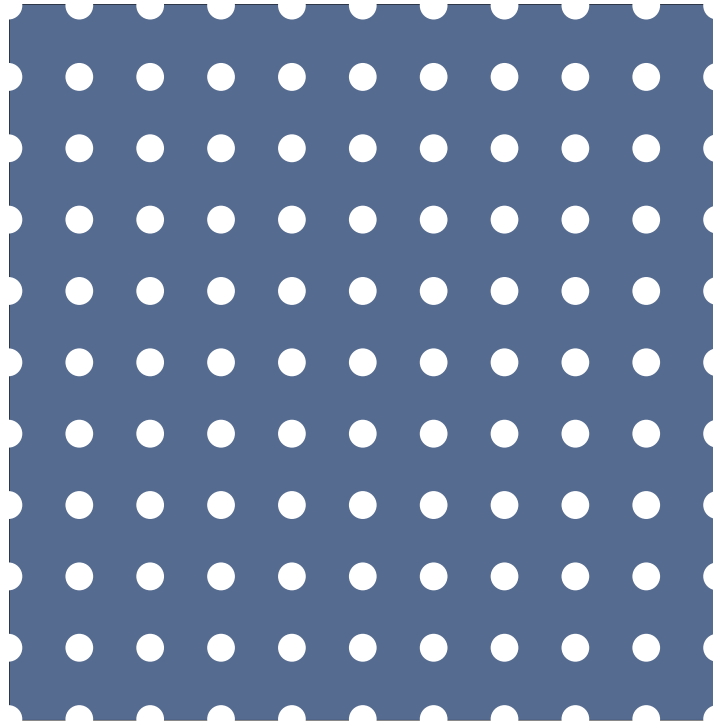
C-30mm, U-35mm



LR-20mm x 4mm



LR-40mm x 8mm
U13X47.5

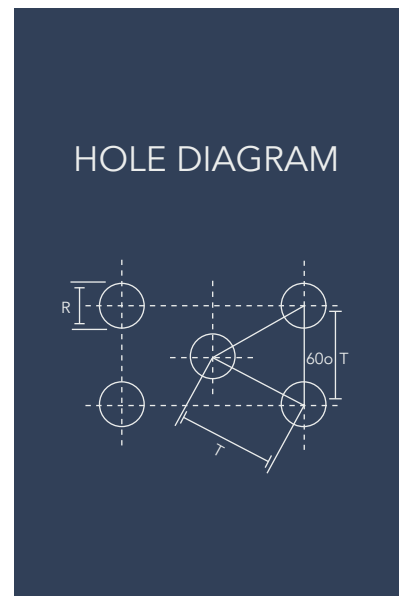
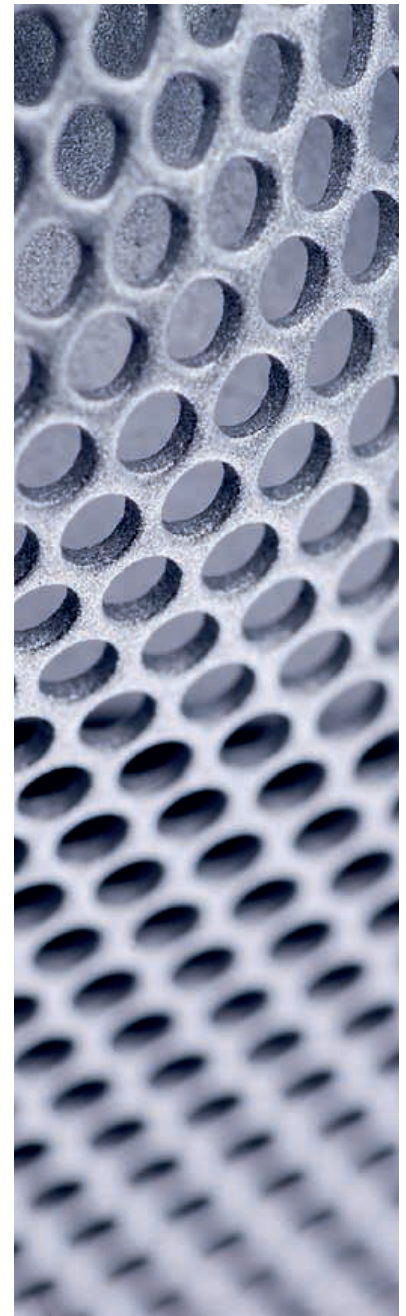


PERFORATED PLATE

Perforated plate is manufactured by cold punching sheets of metal with an arrangement of holes of any shape and size in various patterns. There is a large variety and we only stock the more popular specifications although others are available to special order.

Perforated metals are used in a vast number of industries for sorting and screening any material from sugar and spice to sand and gravel. They are used extensively in heating and ventilating installations where they combine the practical with the ornamental.

KEY			● 2M X 1M ■ 2.5M X 1.25M □ 3M X 1.5M															
STOCK ROUND HOLES (RT)																		
Hole Size (mm)		Pitch (mm)	Open Area	STAINLESS STEEL 316							STAINLESS STEEL 304							
R	T	%	0.5	0.8	1	1.5	2	2.5	3	0.4	0.5	0.8	1	1.5	2	2.5	3	4
0.4	1.25	9								●								
0.5	1	23																
0.5	1.25	14								●								
0.6	1	33									●							
0.6	1.25	21																
0.6	1.5	15								●								
0.8	1.5	26																
1	2	23		●							●	■	■					
1.5	2.5	33			●						●	■	■	■	●			
1.5	3	23		●	■						●	■	■	■	■			
2	3	10			●							■	■	■	●	●		
2	3.5	30		●		●					●	●	●	■	■	■		
2	4	23					●											
2.5	3.5	46																
2.5	4	35	●								●							
3	4	51											●					
3	5	33	●	■	■	■			■		●	●	■	■	■	■		■
3	6	23											■	■	■			
3.25	5	38																
3.5	5	44																
3.5	6	31																
4	5	58																
4	6	40									●		■	■	■	■		●
4.5	6	51											●					
5	6	63																
5	7	46																
5	8	35		●	■	■	■		■		●	■	■	■	■	■	■	●
6	9	40											■	■	■	■		
7	9	55											●					
8	12	40							●				■	■	■	■		■
10	14	46												●	●			
10	15	40				●			■				■	■	■	■	■	■
12	15	58																
12	16	51																
12	20	33																
15	20	51												●			●	
15	25	33																
20	25	58																
20	28	46													●			
25	34	46																
30	36	63																
40	50	58																
50	60	63																



KEY

● 2M X 1M

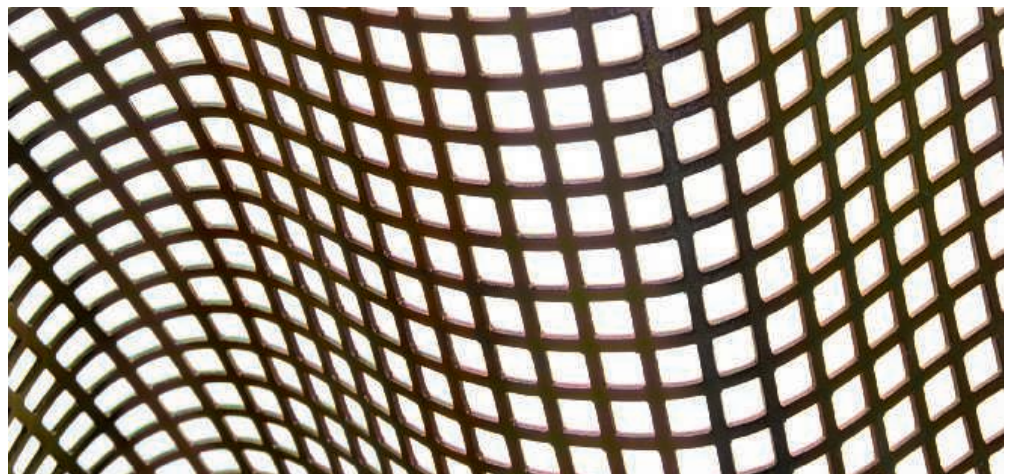
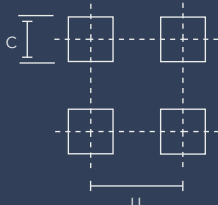
■ 2.5M X 1.25M

□ 3M X 1.5M

STOCK SQUARE HOLES (CU)

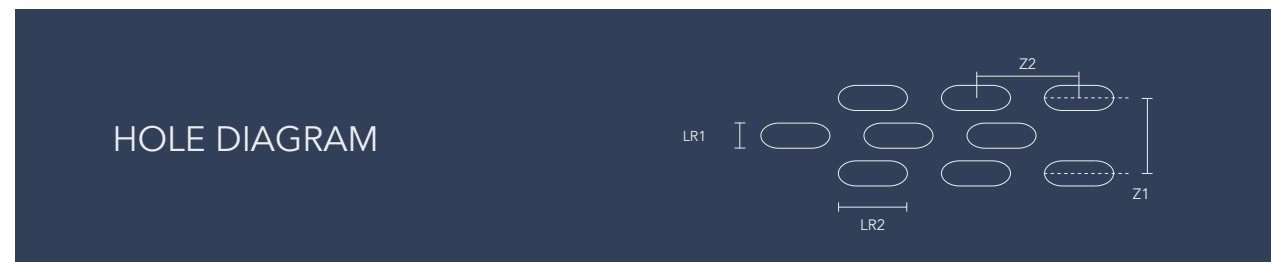
Hole Size (mm)	Pitch (mm)	Open Area %	STEEL					GALVANISED			ALUMINIUM			STAINLESS STEEL 316			STAINLESS STEEL 304					
			0.75	1	1.5	2	3	1	1.5	2	1	1.5	2	1	2	3	0.8	1	1.5	2	2.5	3
C	U	%																				
3	5	33	●																			
3	4.5						□															
4	5	58																				
4	6	40																				
5	7	63				●						■										
5	7.5	46	●	●	●	●		●	■		●	●	●	●		●	●	●				
5	8	35					□		■				□									
6	9	40			●																	
7	9	55																				
8	10	64		●																		
8	11	53		●	●																	
8	12	40		●	●	●	□					●	●	●						●	□	
9	12	56														●						
9	38	5.8			●																	
10	12	70		●	●	●		●	□	●	●	●	●	●	●				●	●	●	●
10	14	46		●	●	●	□			●	●	●							●	●	●	□
10	15	40			●	●	□		□	●	□		●			●			●	●		●
12	15	58																				
15	20	51				●	●															
15	25	33																				
20	25	58			●	●	●															
25	35	51				●	●															
CD 8	Z17											●										

HOLE DIAGRAM



KEY	● 2M X 1M	■ 2.5M X 1.25M	□ 3M X 1.5M
------------	-----------	----------------	-------------

STOCK SLOTTED HOLES (LRZ)												
Slot Size	slot length	Open Area	STAINLESS STEEL 304			GALVANISED			ALUMINIUM			
LR2XLR1	Z2XZ1	%	1	1.5	2	1	1.5	2	1	1.5	2	3
20X1	5X3		●									
20X1	7.2X24	23							●			
20X1.5	8X24	33							●			
20X1.5	8X25	30		●								
20X1.75	9X24	32							●			
20X2	8.4X24	35							●			
20X2	9X24	32	●									
20X2	10X24										●	
20X2.25	10X24								●			
20X2.5	11X24	37							●			
20X3	5X 3.2		●									
20X3	12X24	40							●			
20X3	12X25	38										●
20X4	16X4								●			
20X4.5	17X24								●			
20X5	18X24	44							●	●	●	
20X5	18X25	42										●
20X6	21X25								●			
20X10	32X25	45										●
25X5	16X30	50					●					
25X8	28X34	39							●			



DECORATIVE PERFORATED SHEET

MILD STEEL



Large trefoil leaf
10mm

2Mx1Mx1mm
(Stock code: 500 110 510)



Trefoil leaf
10mm+hole

2Mx1Mx1mm
(Stock code: 500 110 512)



Pointcross
16mm

2Mx1Mx1mm
(Stock code: 500 110 530)

BRASS



Large trefoil leaf
10mm

2Mx1Mx0.8mm
(Stock code: 530 108 510)



Trefoil leaf
6mm

2Mx1Mx0.8mm
(Stock code: 530 108 520)



Pointcross
16mm

2Mx1Mx0.8mm
(Stock code: 530 108 530)

U-PROFILES

The standard solution for framing (perforated) plate, expanded metal, and some types of wire mesh.

The depth of the frame profiles means that the material being framed does not need to be cut to an exact size.



U 20 - 1.5



U 20 - 2.0



U 20 - 3.0



U 30 - 5.0



U 30 - 8.0



U 40 - 10.0

TYPE	THICKNESS mm	INSERT DEPTH mm
U 20 - 1.5	1.5	1.5
U 20 - 2.0	1.5	2.0
U 20 - 3.0	1.5	3.0
U 30 - 5.0	1.5	5.0
U 30 - 8.0	1.5	8.0
U 40 - 10.0	1.5	10.0

MATERIAL

Steel, galvanised steel, stainless steel, aluminium.

MATERIAL THICKNESS: Approx 1 - 1.5mm for steel and approx 1 - 2mm for aluminium, depending on the size of the opening.

LENGTH: 2500mm